

VERSALIFT

VT145-F

Van mounted telescopic platform



PTO driven hydraulic pump



FPC controls with up to 4 actions at a time



Hydraulic axle locking system



Class leading leftover payload



Outriggers mounted below the vehicle



VERSALIFT

A **TIME** MANUFACTURING COMPANY

VT145-F - Mercedes-Benz Sprinter

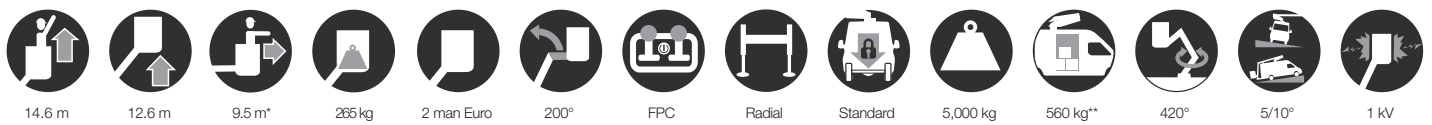


Features the sturdiest boom design available

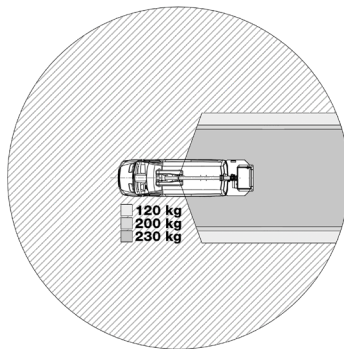
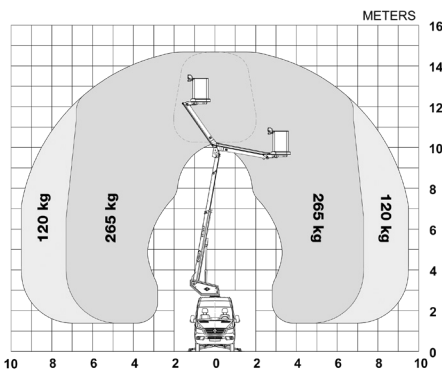
A vast list of optional equipment is available, allowing you to customize the VT to meet your specific demands.

The Versalift patented hydraulic Axle locking system allows the operator to set up the access platform quickly without the

■ Length: 7,310 mm ■ Height: 3,500 mm ■ Wheelbase: 3,665 mm

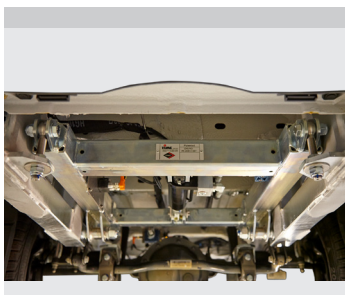


Diagramme(s)



Options

- Bucket rotator (2 x 85°)
- Walk-Through-System
- Workshop interior
- Reversing camera
- GVW upgrade to 5,500 kg
- Drive option (drive the vehicle with raised platform)
- Load cell (Variable load dependant outreach)
- Home function & limited working area without outriggers



Hydraulic axle locking system



Workshop interior (optional)



Walk-Through-System: Direct access from the cabin to the bucket through the vehicle (optional)



FPC (Full Proportional CANbus controls): Variable outreach (with load cell) and up to 4 actions at a time

Notes

Technical information is subject to change without prior notice. Images may show optional equipment. Installations and/or options may not be available in your specific region.

* Depending on the vehicle.

** Max payload with a driver, a passenger and a full tank of fuel (220 kg added to the installation weight).

*** Reduced outreach and max 230 kg bucket capacity.

**** Requires the option "Limited working area without outriggers".

Distributor

Versalift International
Soendervang 3, 9640 Farsøe
Denmark

+45 9863 2433
sales@versalift.dk
versaliftinternational.com